

# Roboterassistierte Blasenentfernung und Ersatzblase

H. John



**Blick durchs Schlüsselloch –  
Endoskopische Operationen in der Urologie**

Exkursion Samstag 13. April 2019

# Übersicht

- **Harnblasenentfernung: wann und wieso ?**
- Harnableitung nach aussen – „Conduit“
- Ersatzblase an die Harnröhre – „Pouch“

# „Wieso braucht der Mensch eine Harnblase?“

**CULPEPER'S  
LAST LEGACY:**  
Left and bequeathed to his dearest Wife,  
for the publick good,  
*BEING*  
The Choicest and most profitable of those Se-  
crets which while he lived were lockt up in his  
Brest, and resolv'd never to be publisht  
till after his Death.  
*CONTAINING*  
Sundry admirable Experiences in several  
Sciences, more especially in *Chyrur-*  
*gery and Physick.*  
*VIZ.*  
Compounding of Medicines, Making of Wa-  
ters, Syrups, Oyles, Electuaries, Conserves,  
Salts, Pills, Purges and Trochiscs.  
With two particular Treatises; the one of *Fevers*, the  
other of *Pestilence*; as also other rare and choice  
*Aphorisms*, fitted to the understanding  
of the meanest Capacities.  
Never publisht before in any of his other Works.  
By **NICHOLAS CULPEPER**, Late Student  
in Astrology and Physick.  
Printed for *N. Brook* at the *Angel* in *Cornhill*, 1662.

Because a man should do something else be-  
sides continually piss, the Bladder was added to  
contain the Urine.

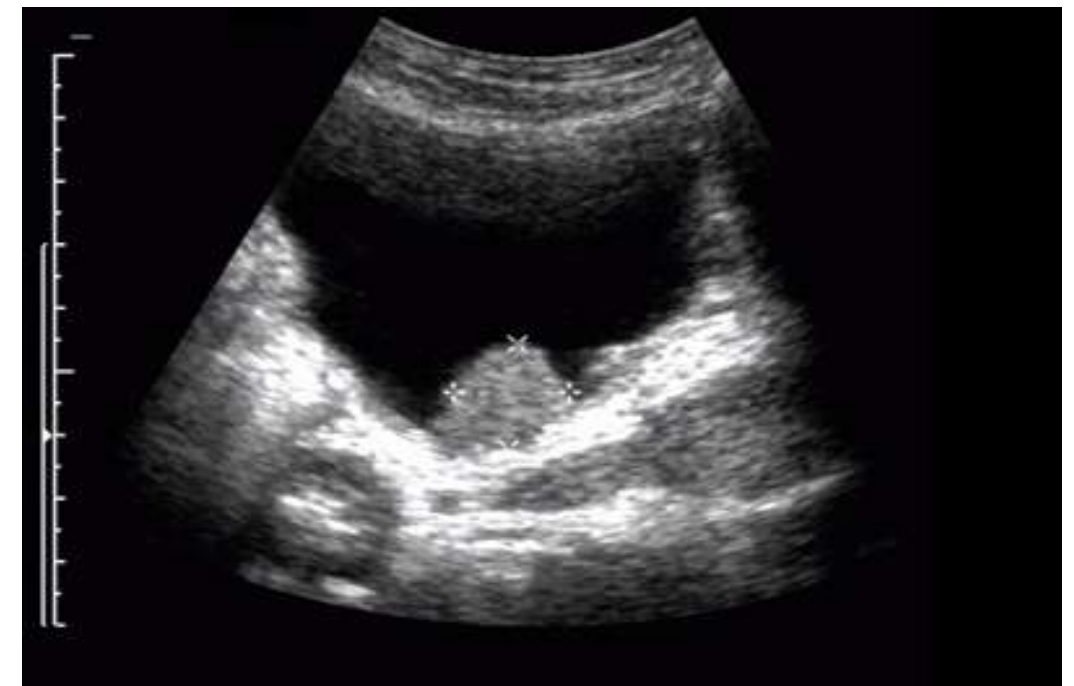
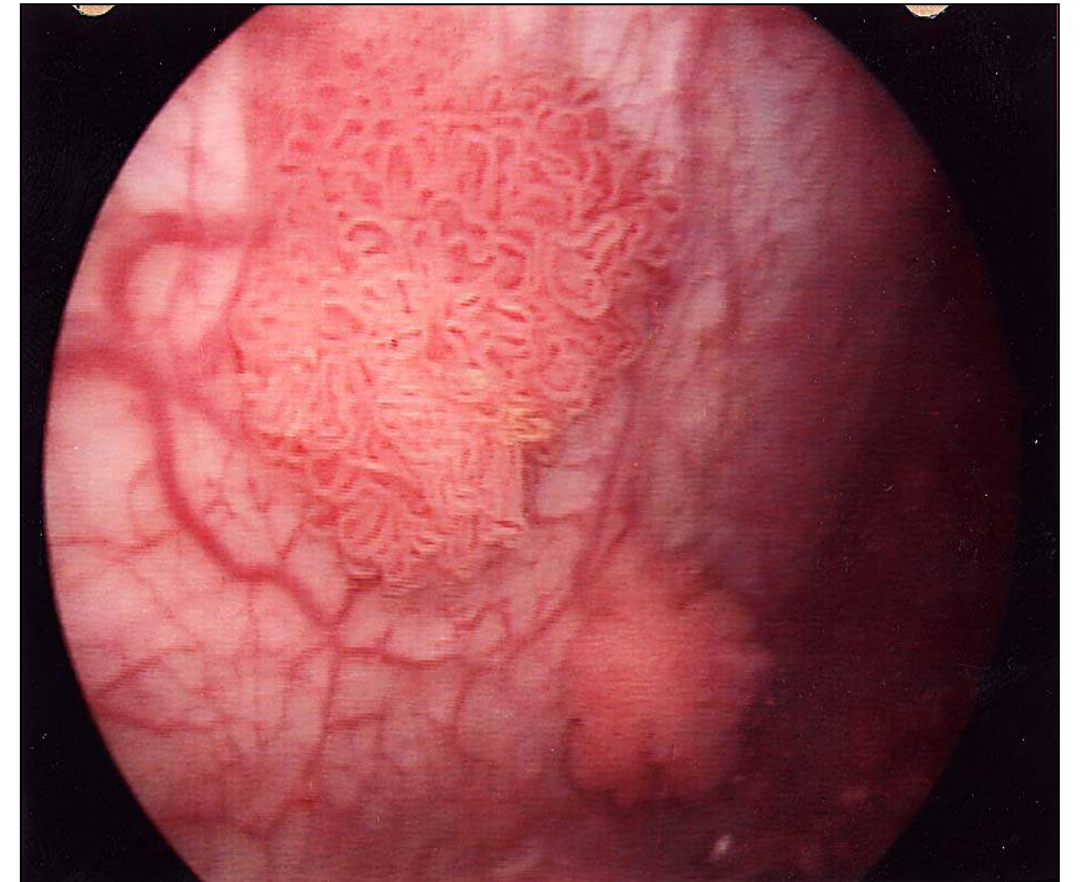
# Blasentumor-Symptome

Makrohämaturie

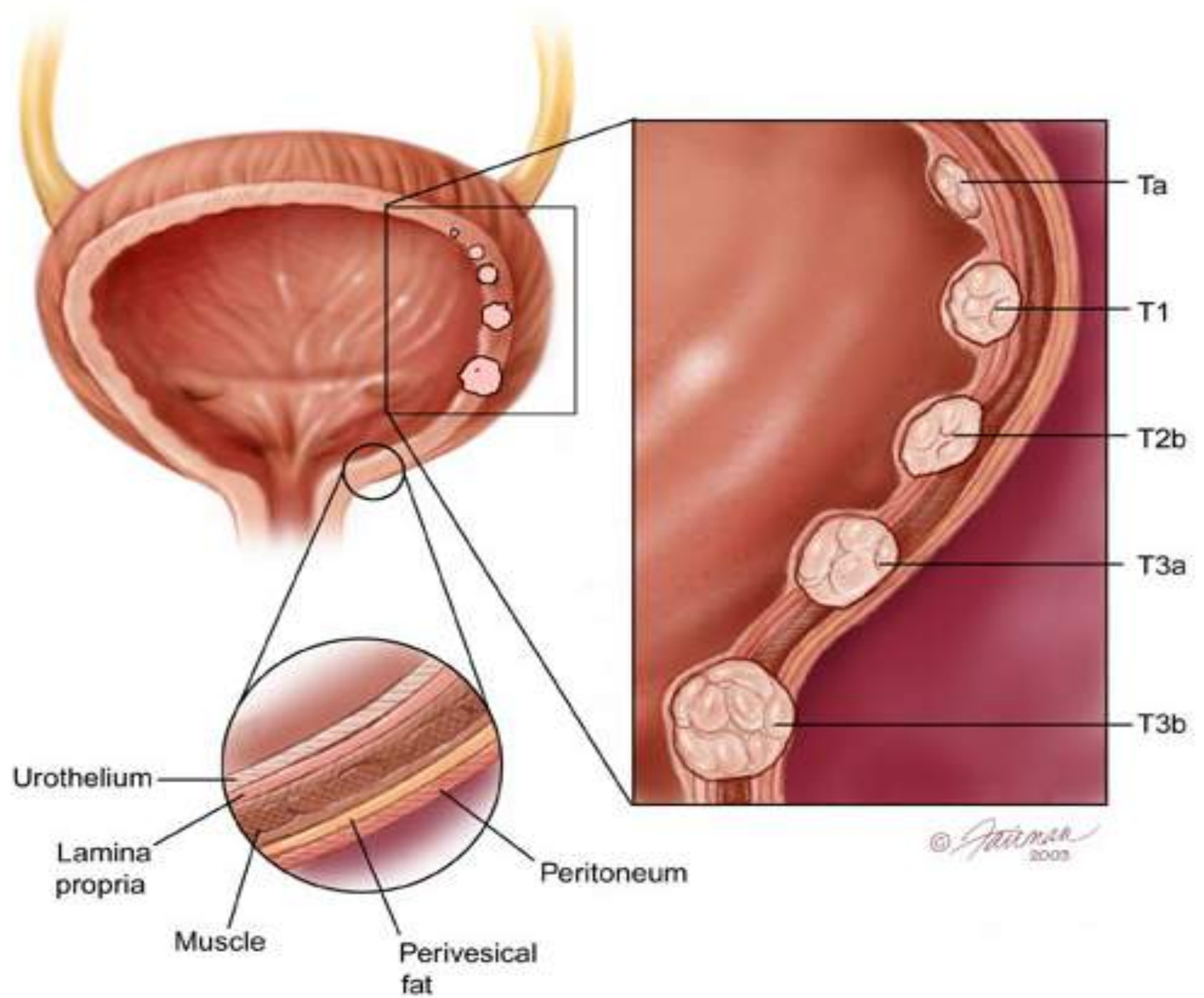
Mikrohämaturie

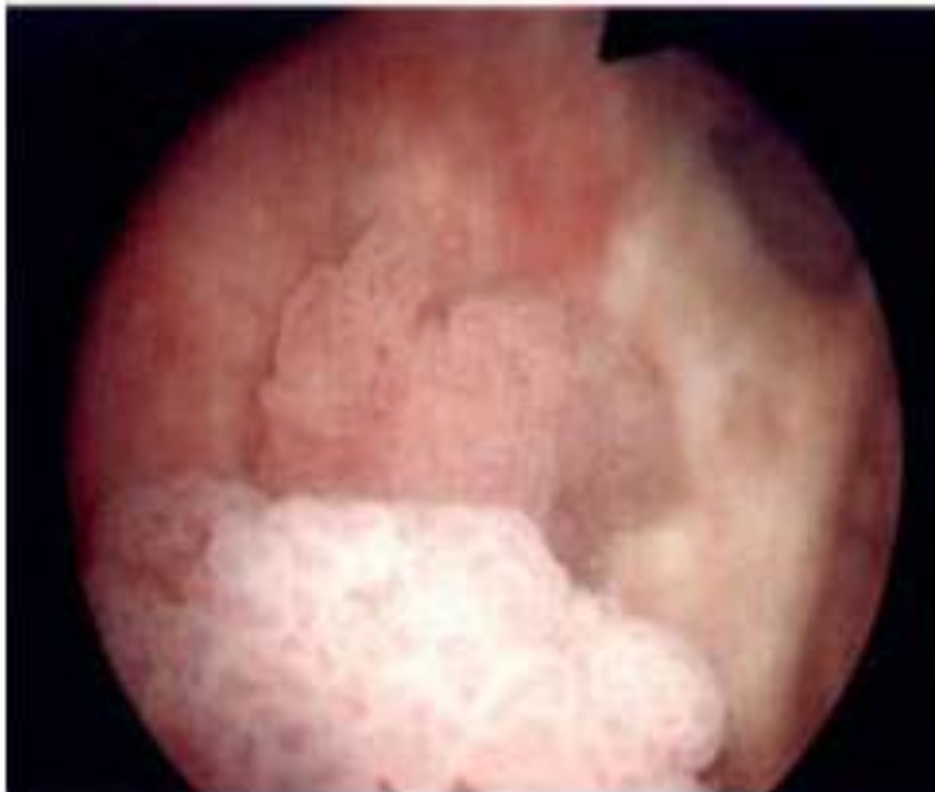
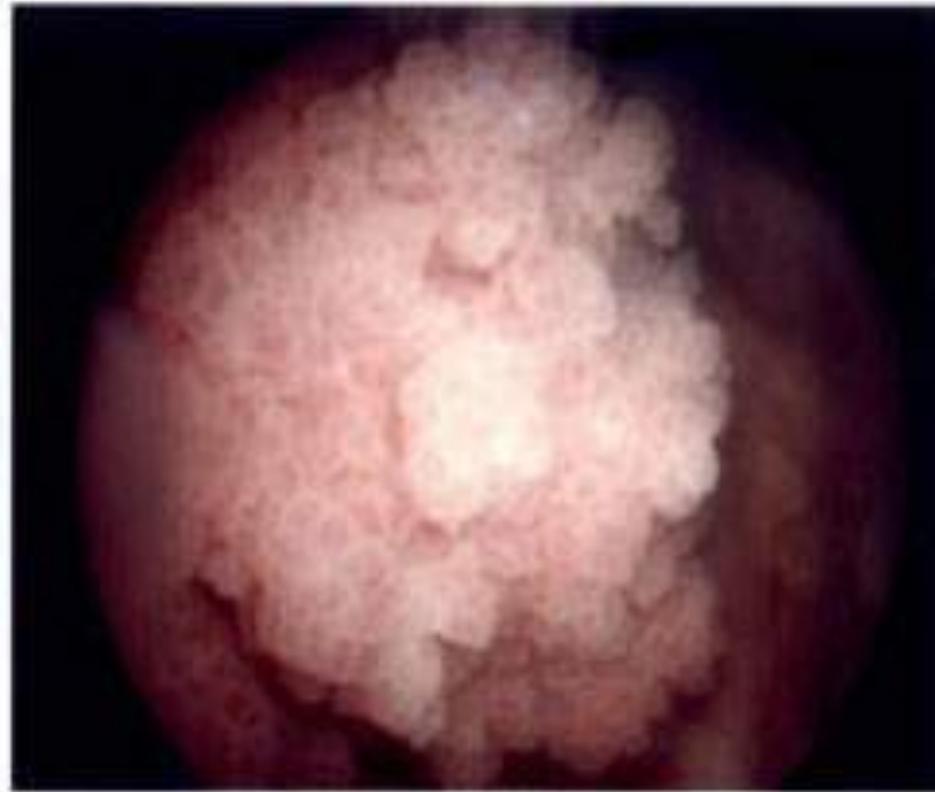
Rezidivierende Infekte

Nierenstauung



# Tumor-Einteilung

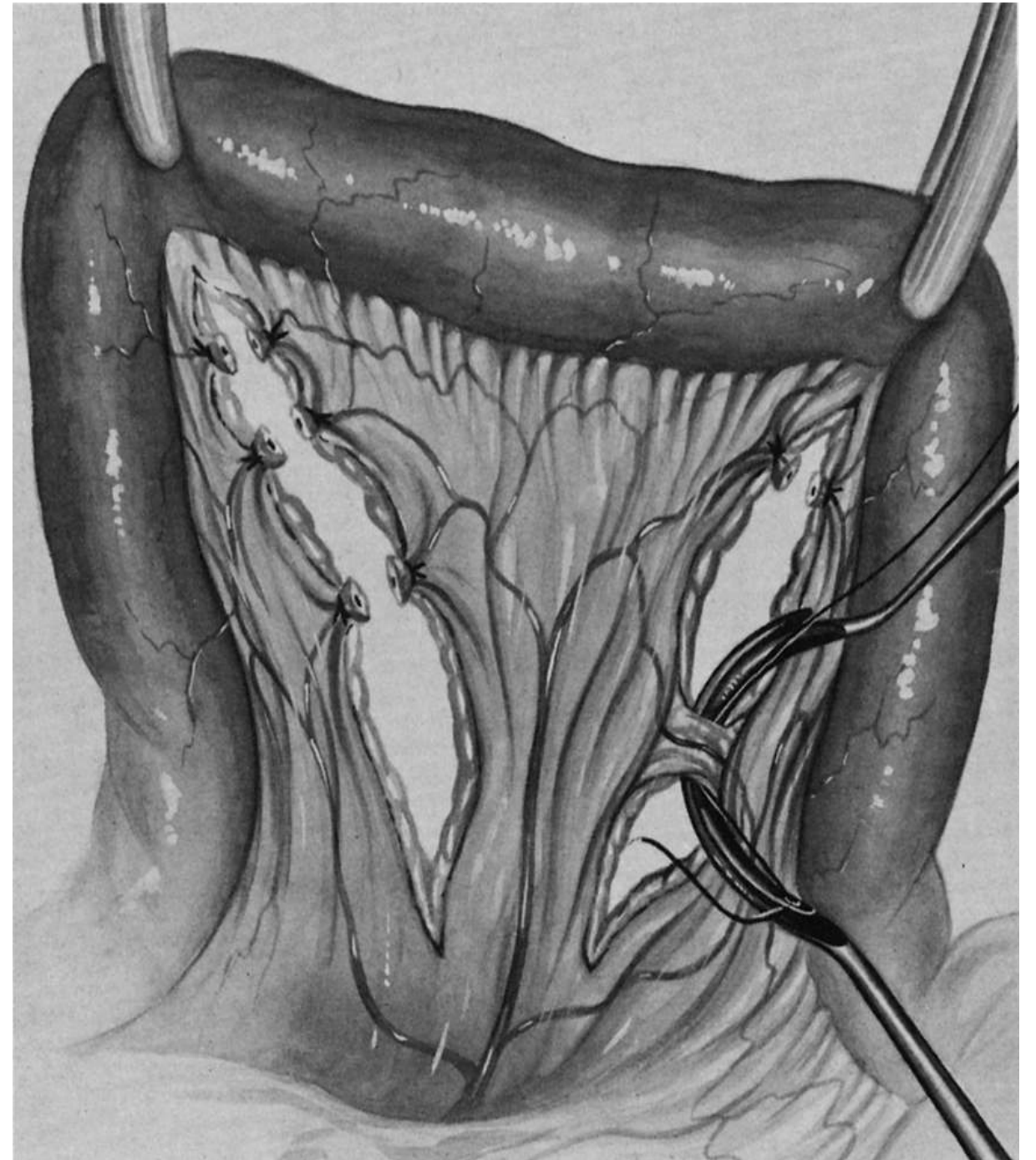
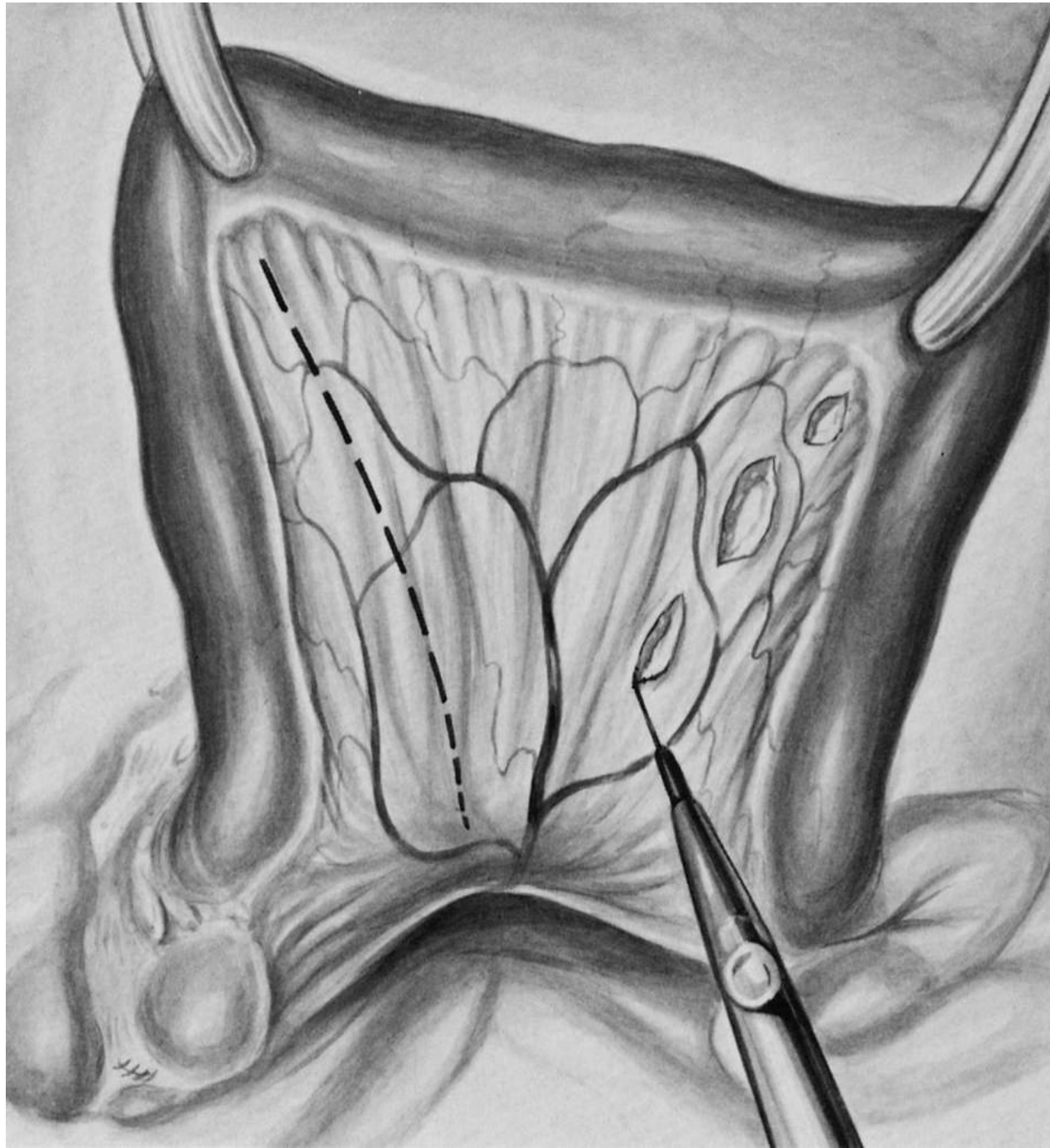


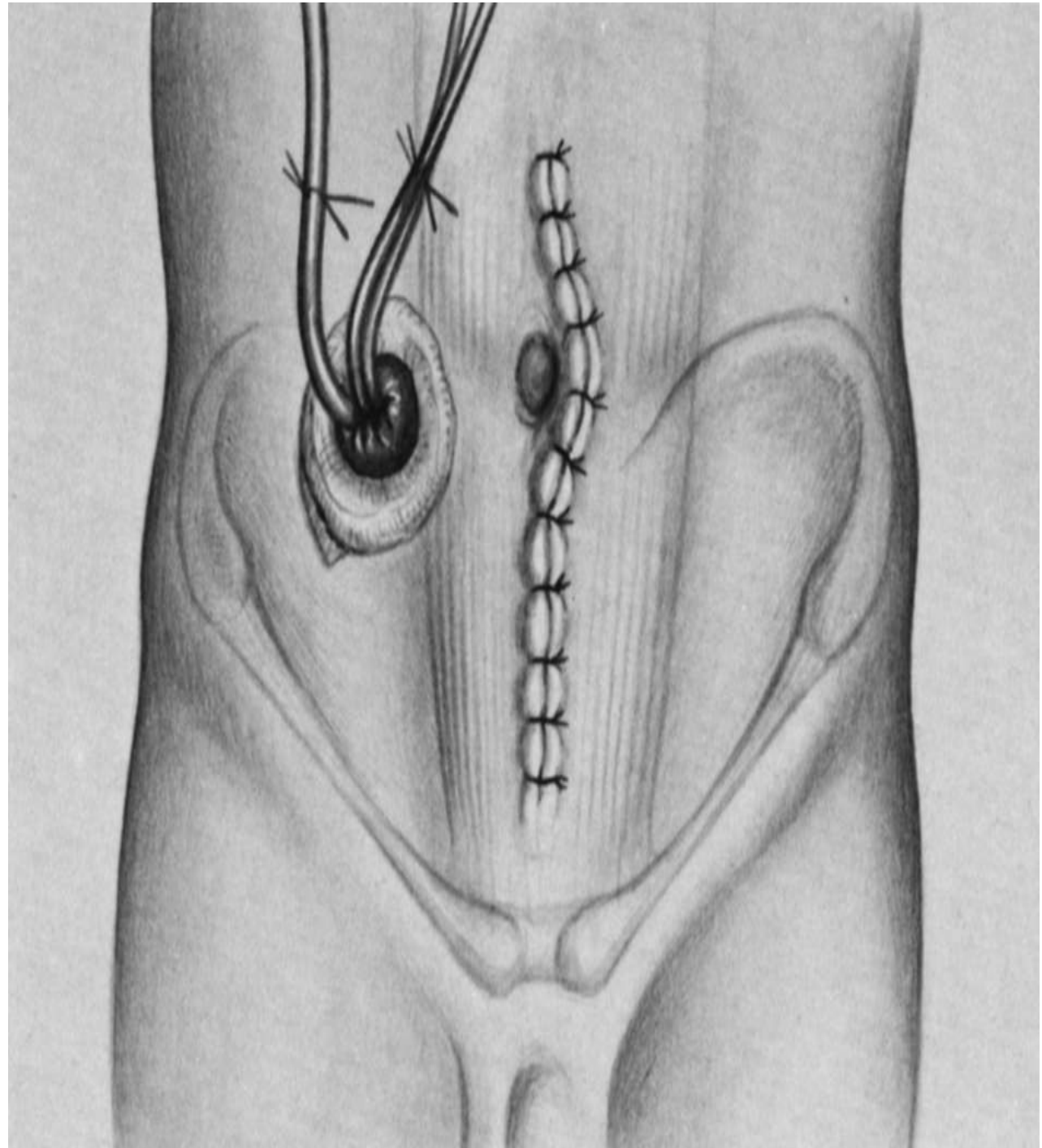
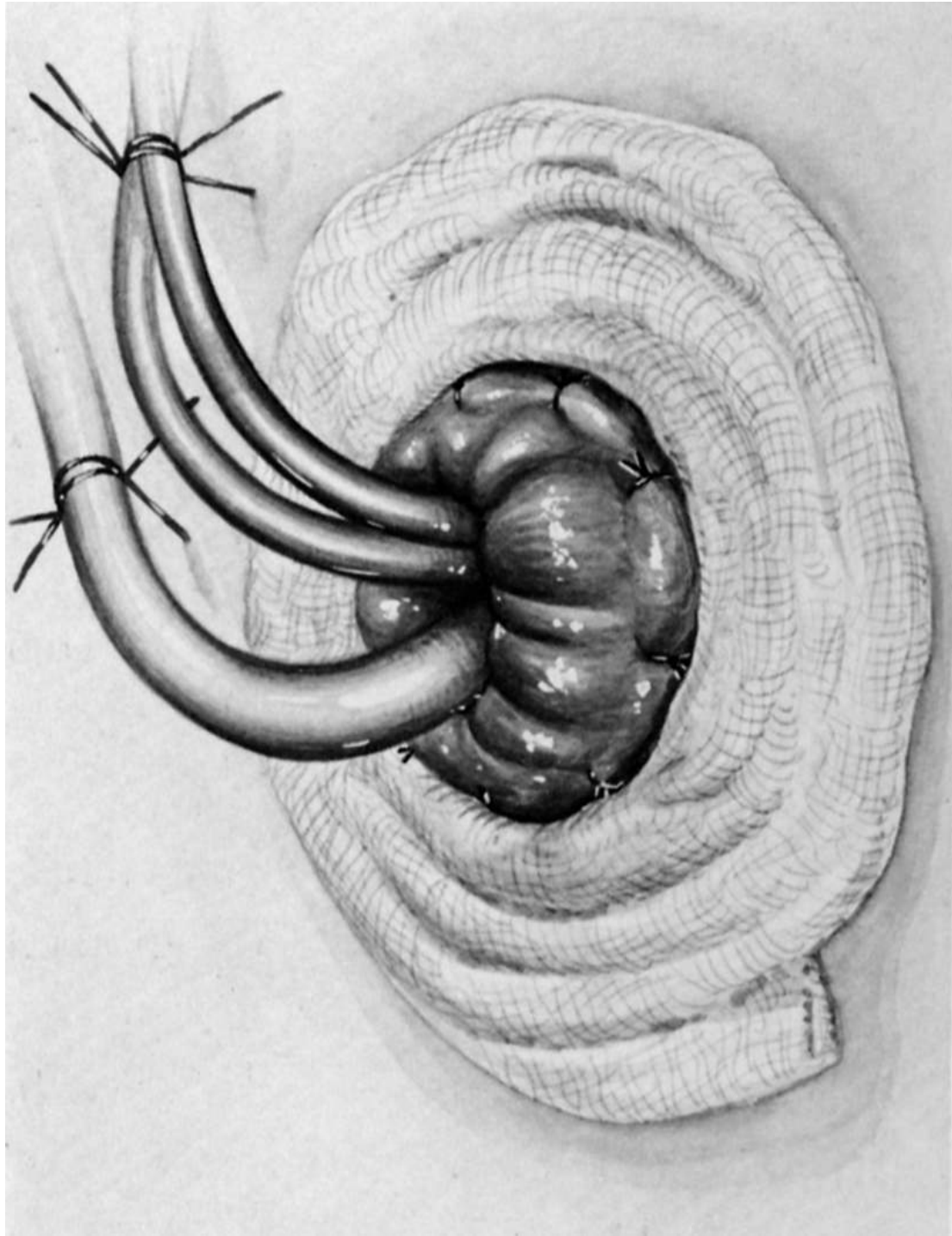


# Übersicht

- Harnblasenentfernung: wann und wieso ?
- **Harnableitung nach aussen – „Conduit“**
- Ersatzblase an die Harnröhre – „Pouch“

# Ileum-Conduit



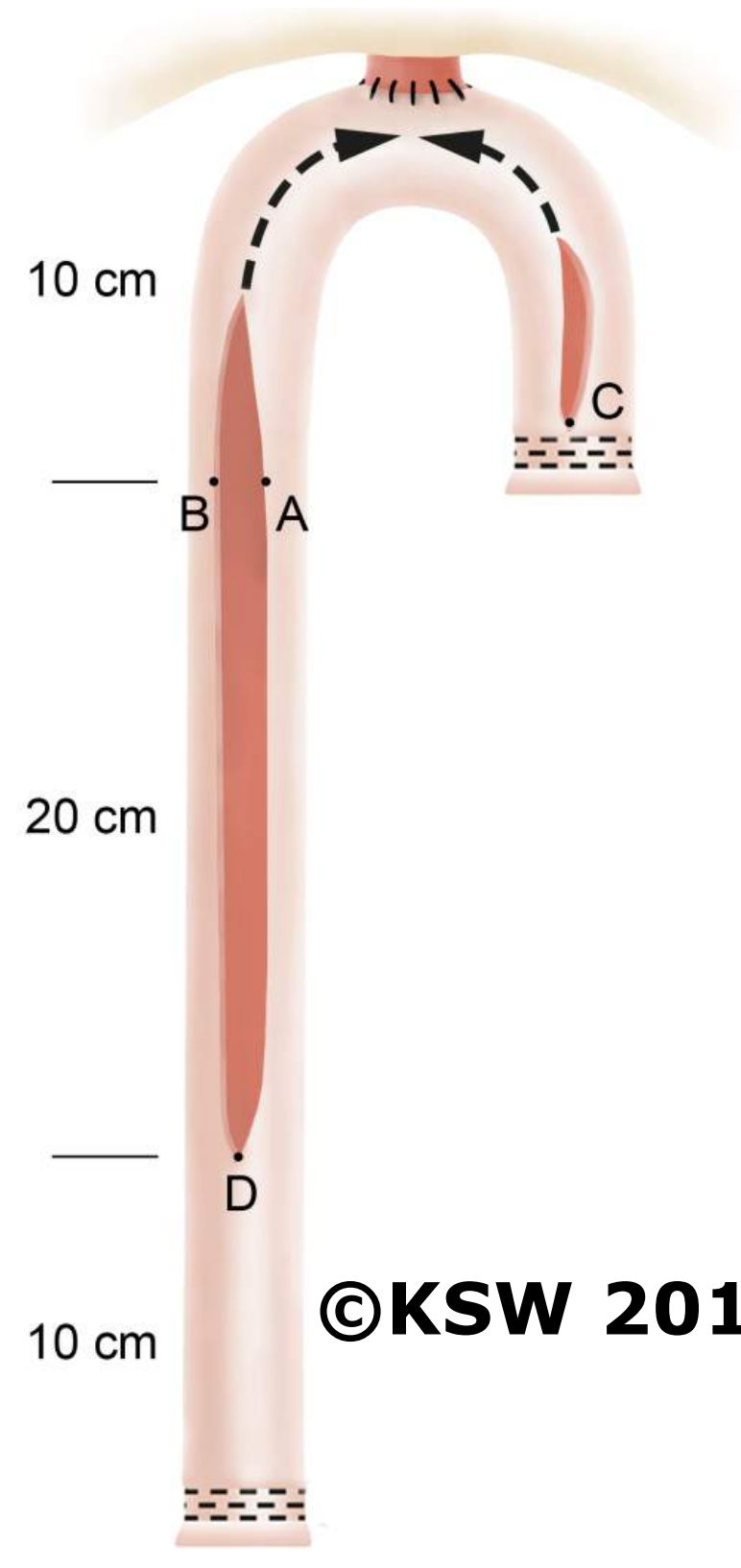
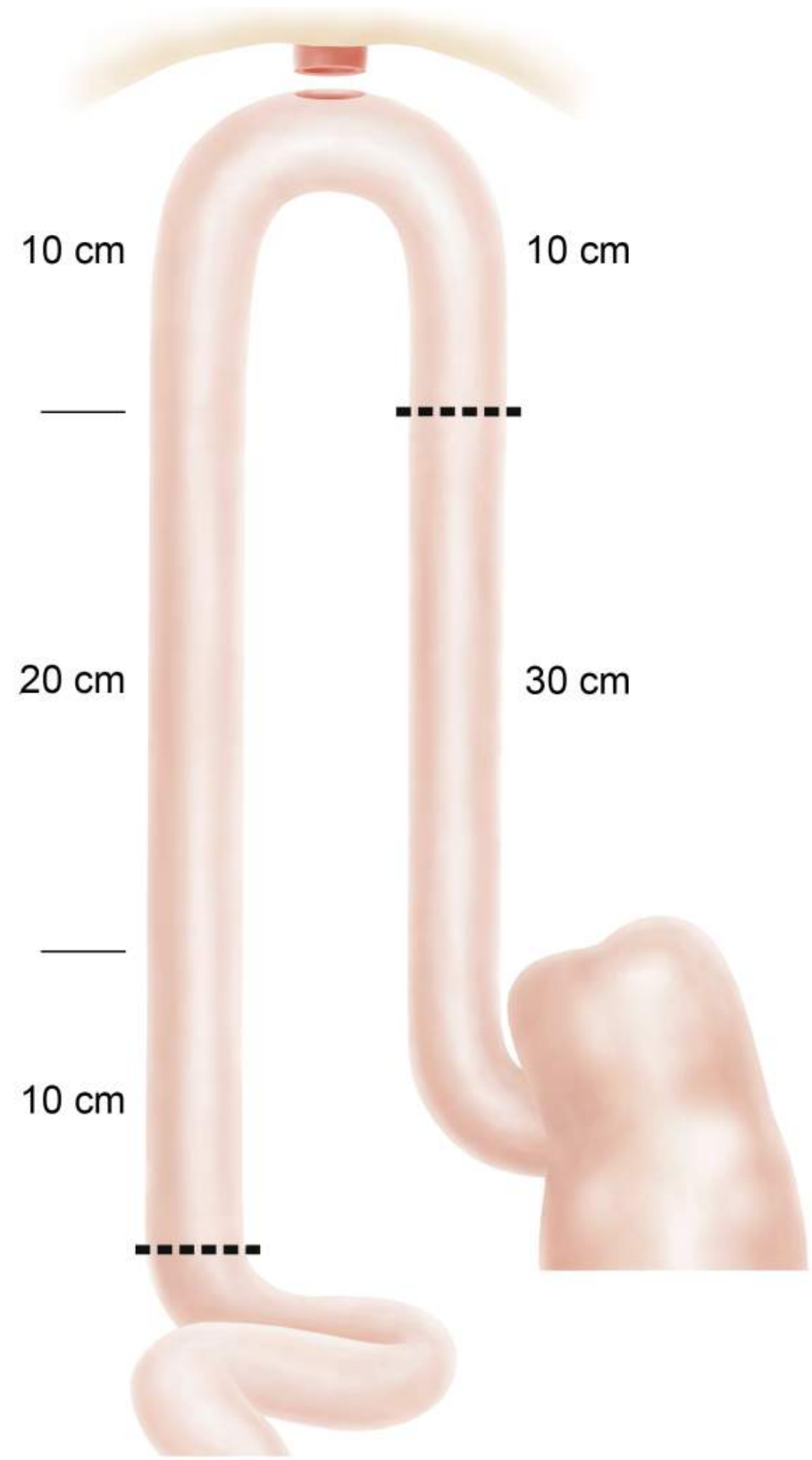




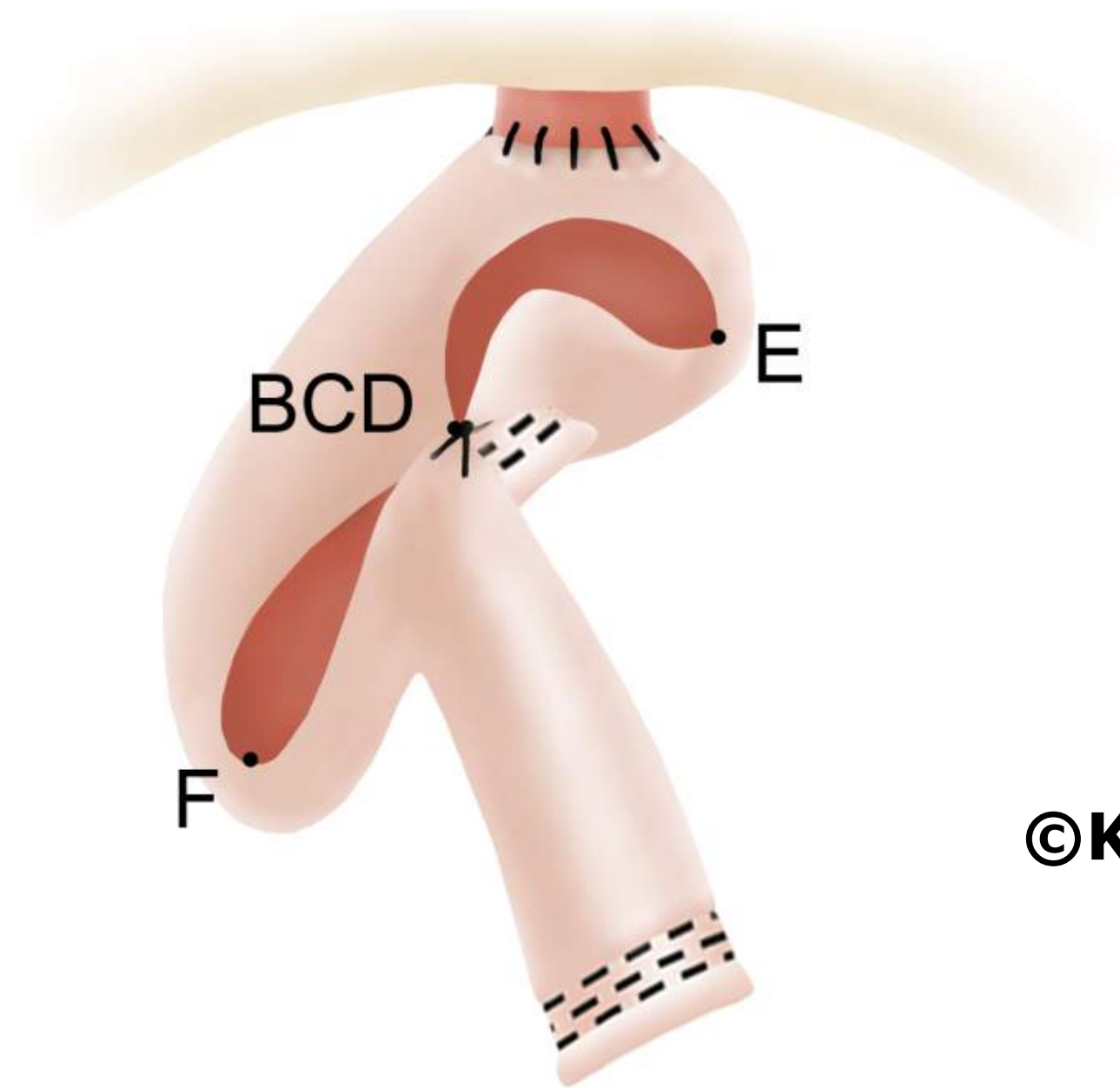
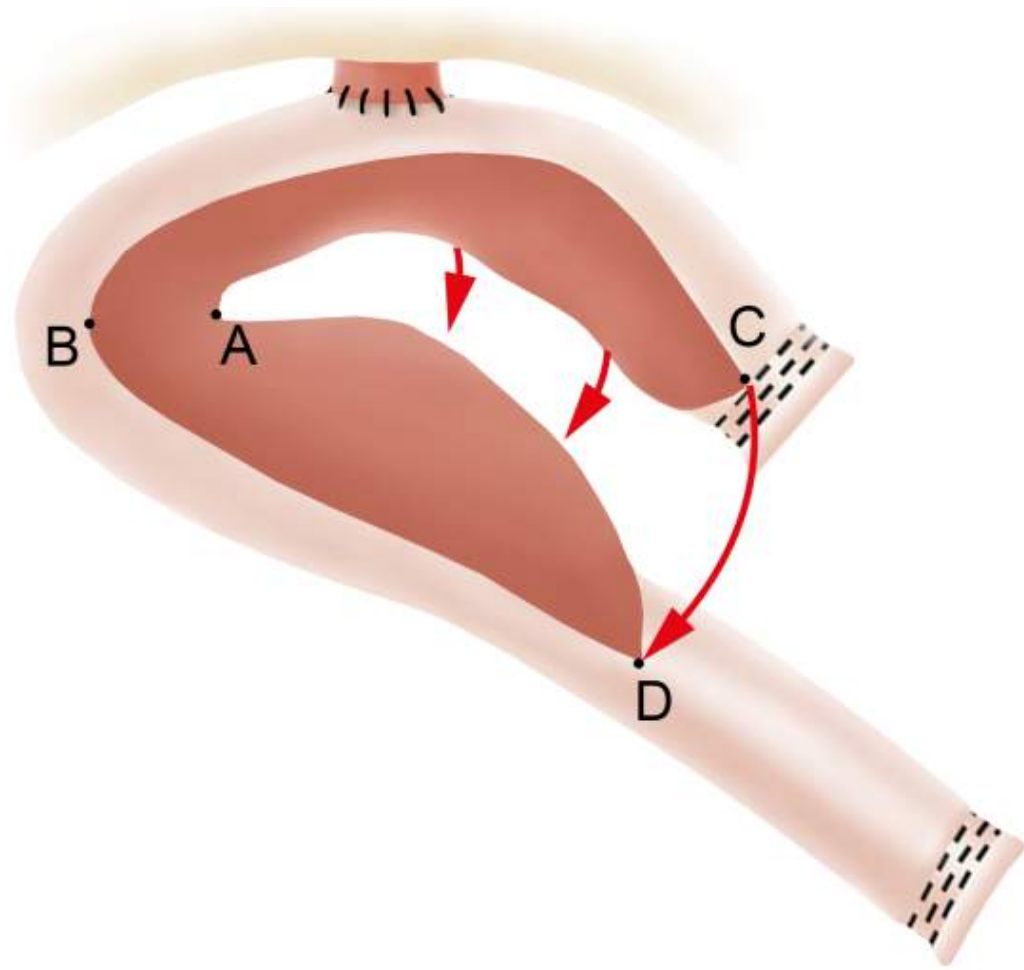
# Übersicht

- Harnblasenentfernung: wann und wieso ?
- Harnableitung nach aussen – „Conduit“
- **Ersatzblase an die Harnröhre – „Pouch“**

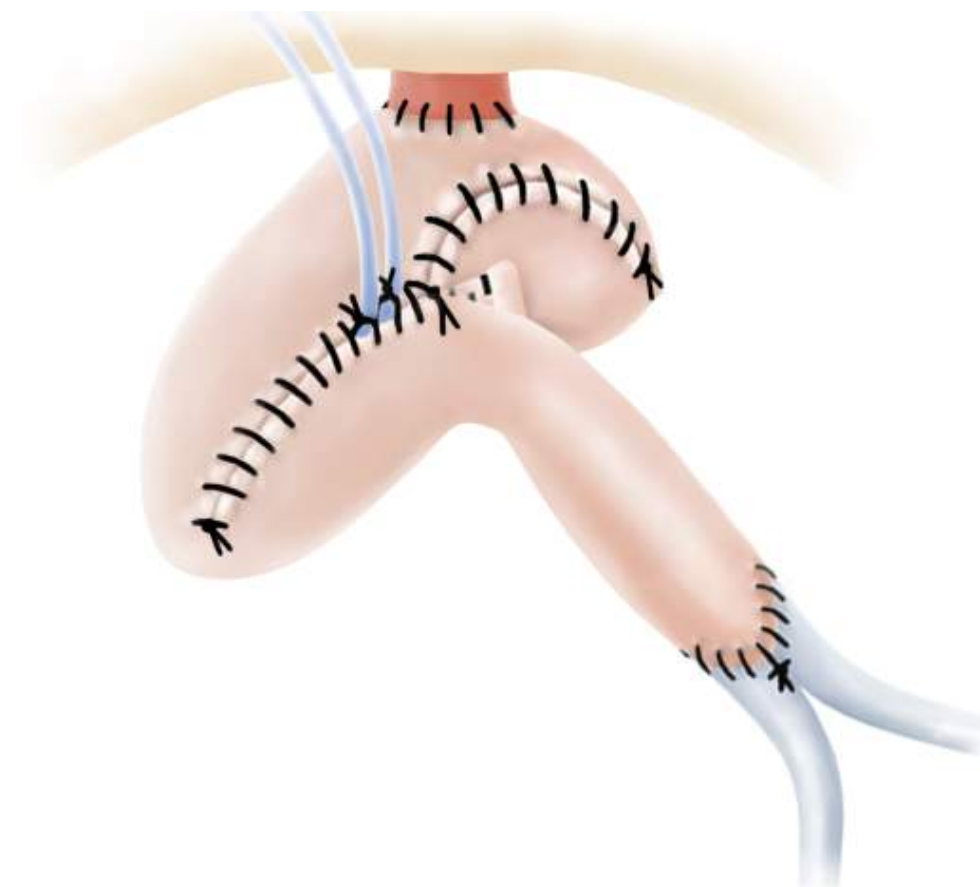
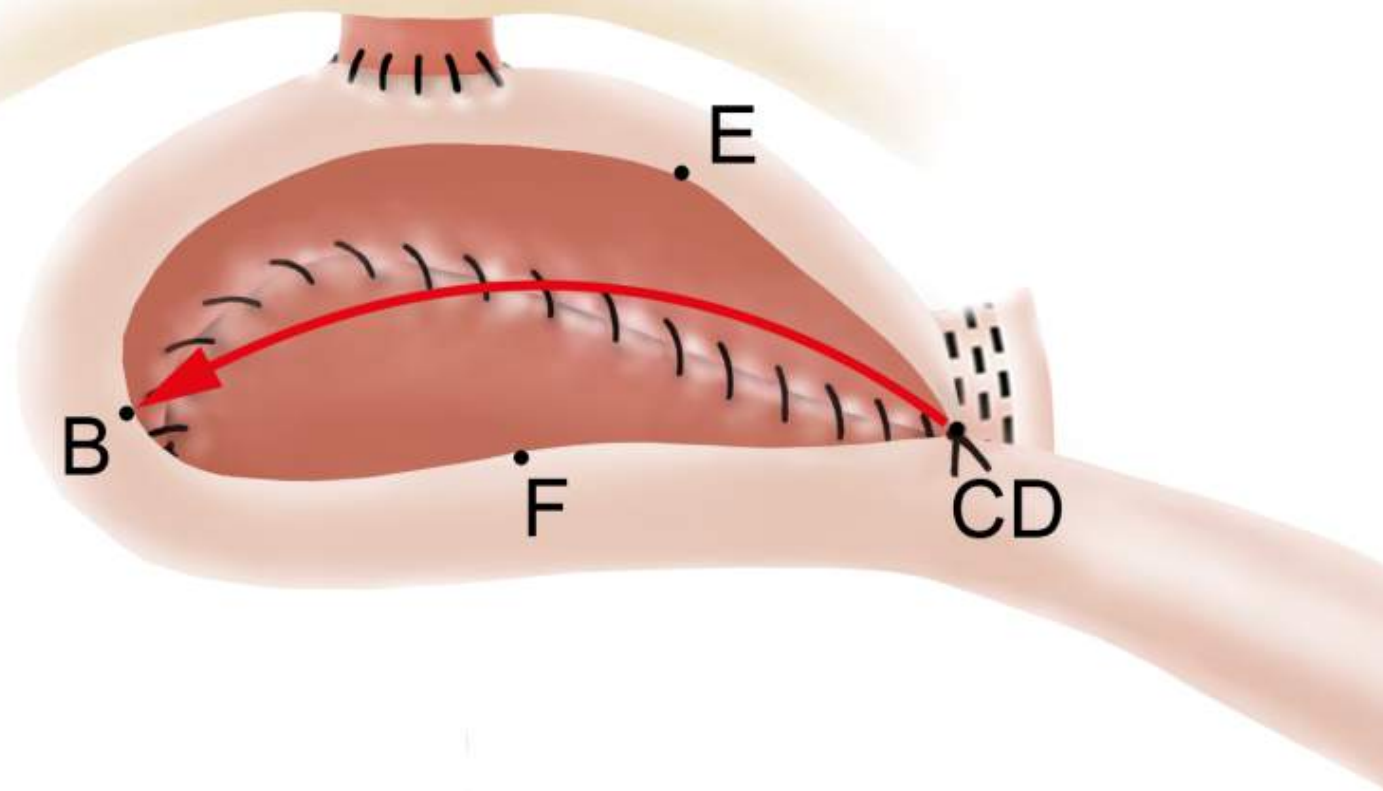
# Ersatzblase

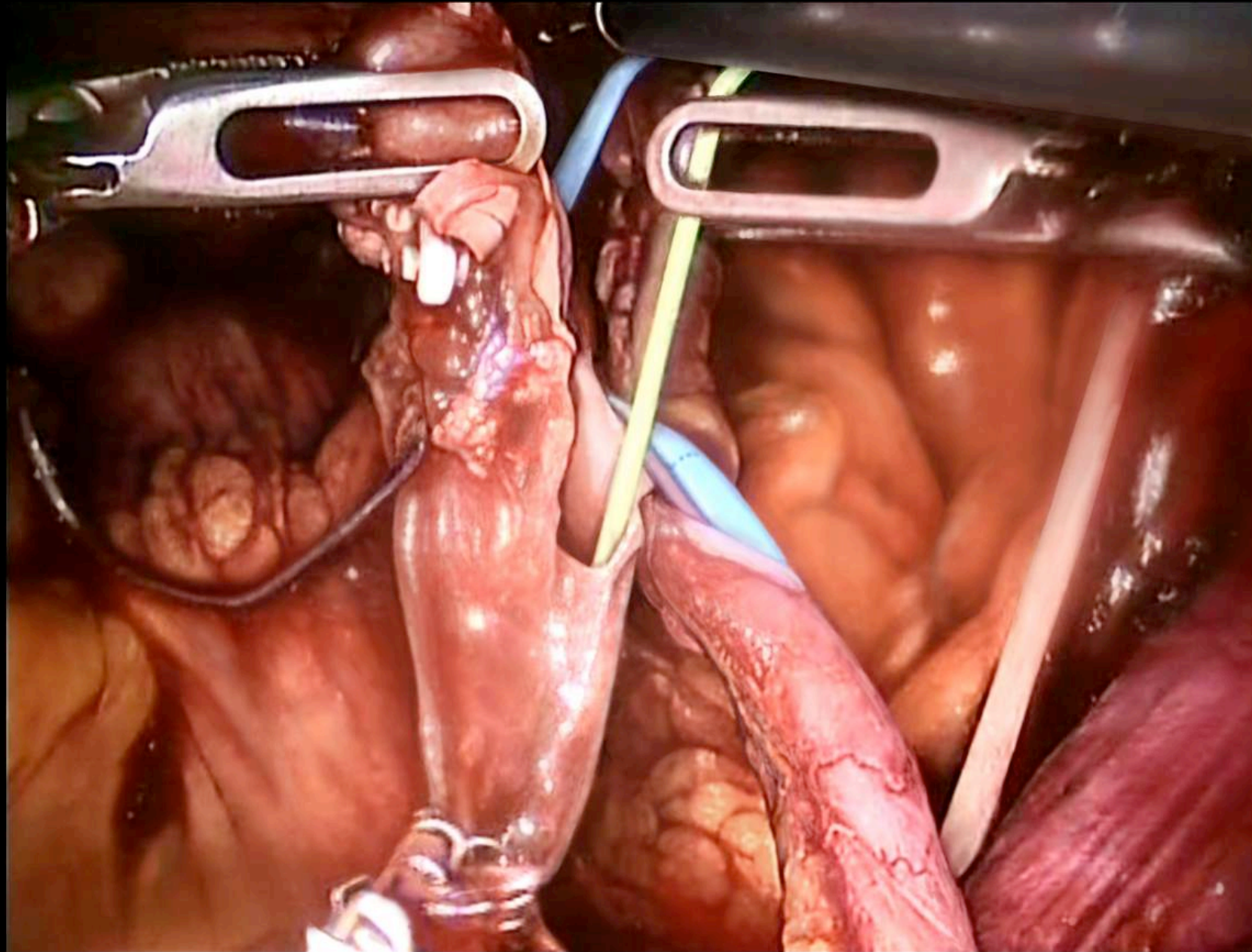


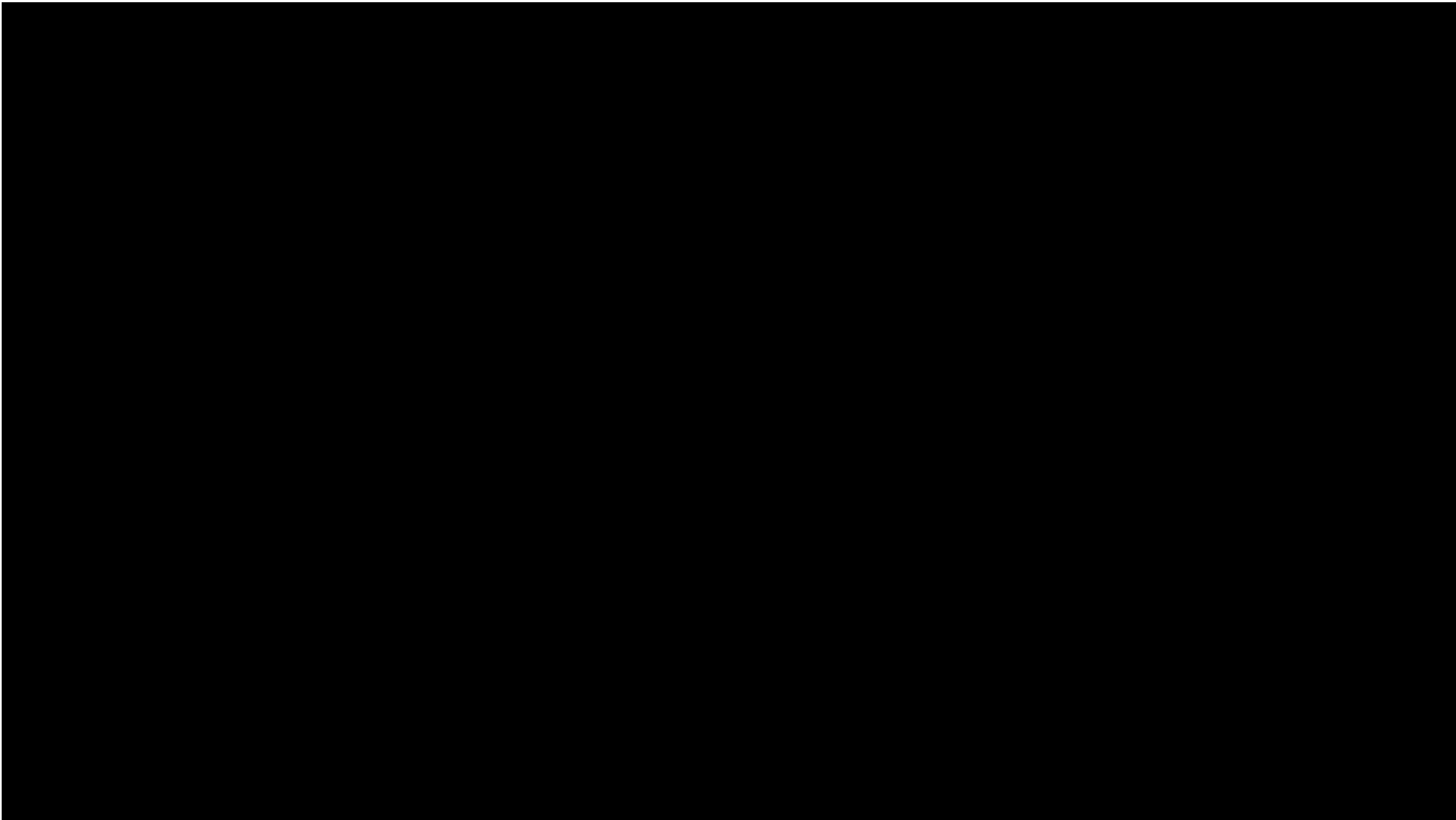
©KSW 2016



©KSW 2016

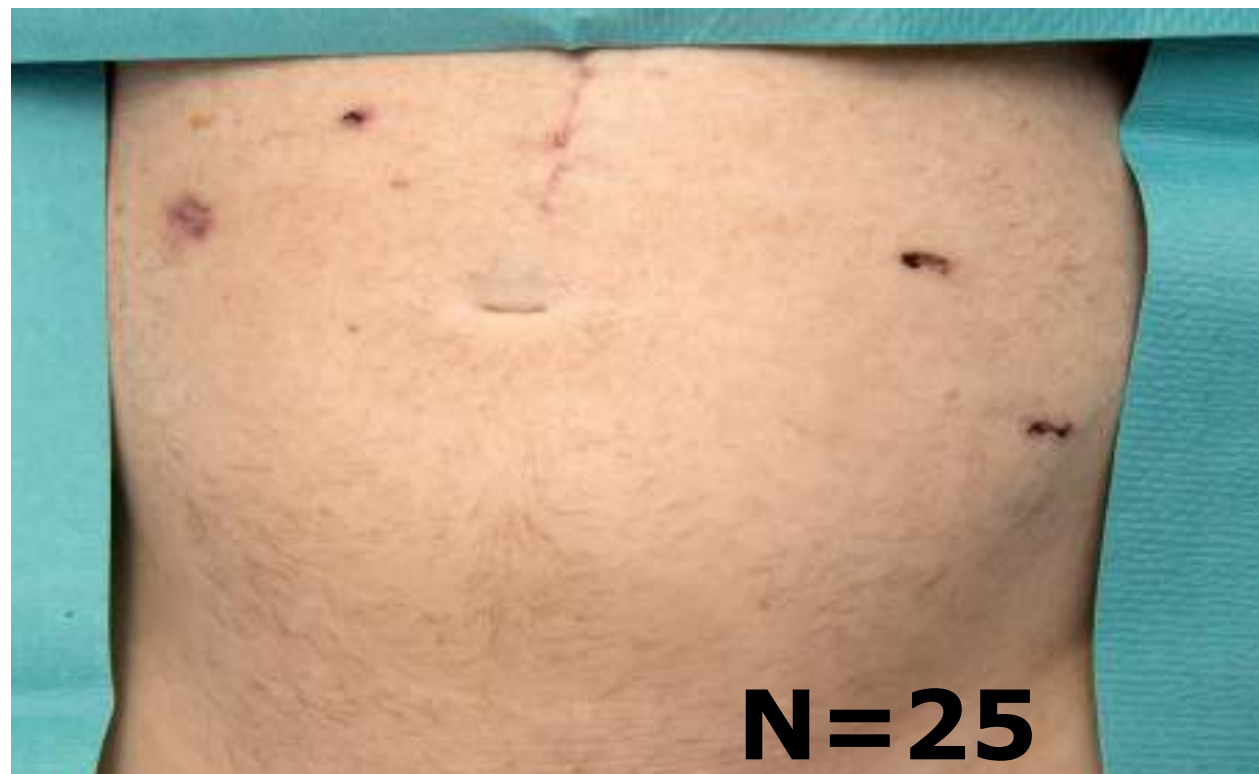








# Conduit und Ersatzblase am KSW





**Vielen Dank !**



**Exkursion Samstag 13. April 20199**